



Struan Community Action Plan

Executive Summary

February 2024

Executive Summary

This document summarises key details from the Struan Community Action Plan (2024-2033).

The Community of Struan

On the west of the Isle of Skye, Struan is a small, scattered community, comprising the main village of Struan along with the smaller surrounding townships Meadle, Gesto, Coillore, Totarder, Balgown, Ullinish, Ose, Caroy & Balmeanach with approximately 250 to 300 residents. The local economy, like most of Skye, is heavily supported by tourism, fishing and crofting. Struan has a small local grocery shop, two churches, an outdoor shop; a small number of food outlets and a primary school, which is now closed. The ultimate goal would be the community gaining ownership of the School by way of a Community Asset Transfer.

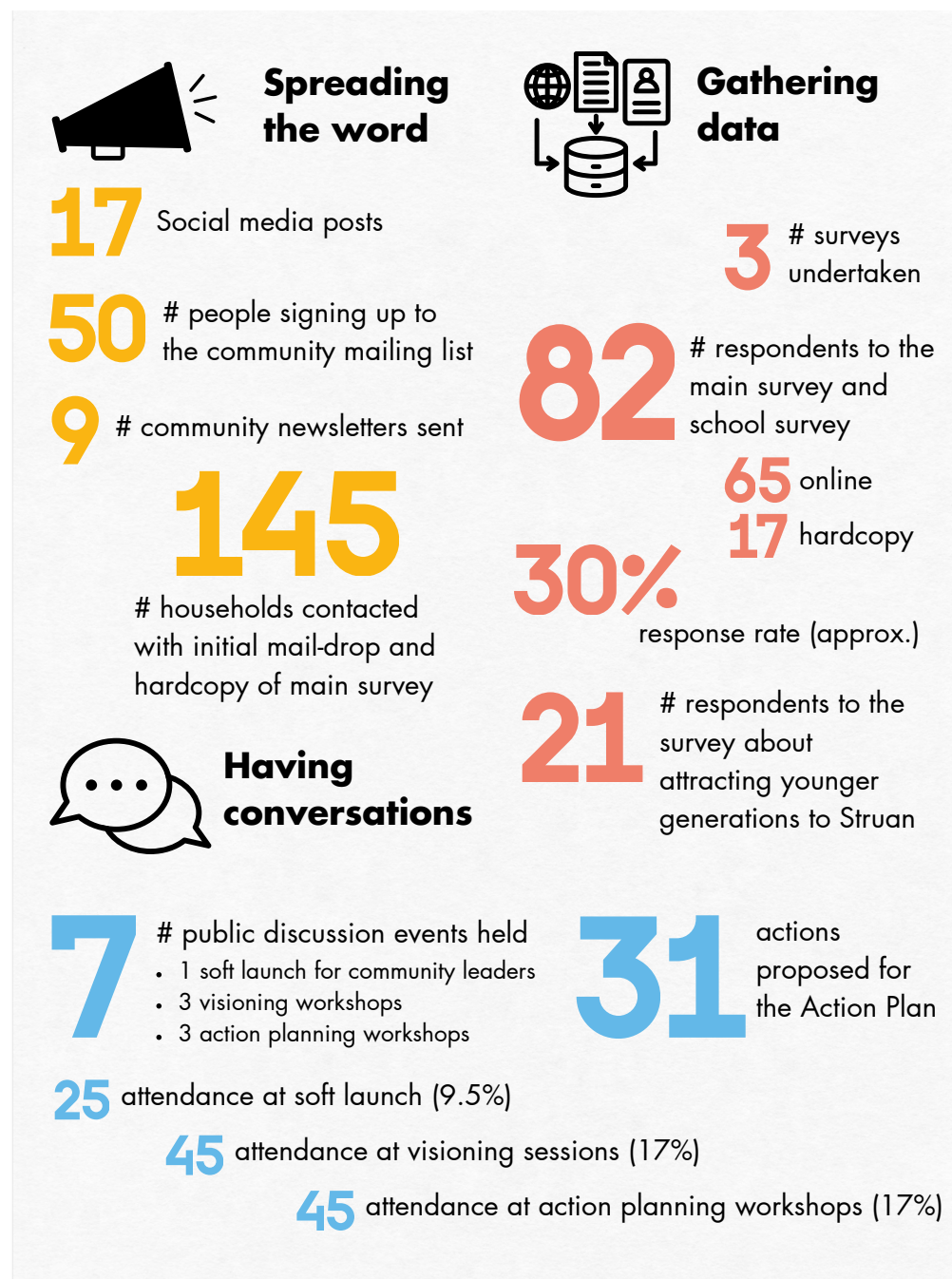
How we developed our Action Plan

Over five months from May 2023 to September 2023 we issued two questionnaires, hosted six face-to-face workshops and public gatherings, and held a variety of other informal conversations to develop this plan.

The Community Action Plan in Numbers

The following graphic spells out the different ways that the community worked together to construct this plan from the bottom up.

Figure 1: Infographic detailing the Struan Action Plan process in numbers



Community Survey Overview

A community survey ran in June 2023 to gather an evidence base of insights from the community. 82 responses were received. The following general conclusions were drawn from the survey:

Likes

- The scenery, landscape, tranquillity and community spirit of Struan are most appreciated, and to a lesser extent the ease of travel to Dunvegan, Portree and Carbost.

Communications

- The overwhelming majority of people in Struan get their community news via word of mouth, Facebook and the Struan Community Website. Maximising the impact of these without excluding people who don't rely on technology for their information will be key.

Support for **community stewardship** of the Struan Primary School Property was overwhelmingly positive, with 94% of respondents supportive.

In terms of a [SWOT Analysis](#) of the Community of Struan:

Strengths

- Struan's landscape, history, tourism offer and local people (supportive networks and active citizenship) are all considered to be strengths.

Weaknesses

- The lack of public transport, poor state of the roads, poor quality broadband and lack of a local shop that meets people's local needs are seen to be weaknesses.

Opportunities

- Developing the former School as a community facility, attracting younger people to remain in Struan, and taking advantage of potential wind farm income are all key opportunities on the horizon.

Threats

- Facilities and amenities and work and the local economy challenges in the short term, with the challenge of housing provision of increasing importance into the future. This appears to be because housing is considered to be so central to attracting and keeping young people in the community for a sustainable future.

Full details of the survey results can be found in Appendix 4. The full Community Survey Summary Report is also [available for download](#).

“Rural but not too remote: it's good for travelling around Skye. Struan is perfectly located within easy reach of Portree, Carbost and Dunvegan.”

Attracting younger generations to live in Struan

A dedicated survey was run in October and November 2023 to gauge the needs of young people connected to Struan. 21 respondents, more than two thirds under the age of 35, replied to our survey.

- Around half of these (9) considered that they would need access to affordable housing if they were to stay in Struan or return to Struan for the long term.
- In descending order of priority, respondents indicated that the following additional factors beyond housing access would attract them to live in Struan.
 - Local shop with acceptable range of basic goods
 - Provision of suitable superfast broadband
 - Public transport to Portree/Dunvegan
 - Local Community Centre
 - Post Office available locally
 - Childrens nursery available locally
 - Employment opportunities in crofting
 - Work units for small businesses/enterprise
 - Apprenticeships available for local work
 - Facilities for access to the sea (for leisure or business)
 - Employment opportunities in tourism/fishing

Full details of the survey results can be found in Appendix 5 and is [available for download](#).



Vision for Struan in 2033 and beyond

Struan in 2033 has become a **thriving**, well-integrated and more **independent** community that has deliberately developed **local skilled employment** opportunities and where everyone feels **comfortable** and **happy** to live.

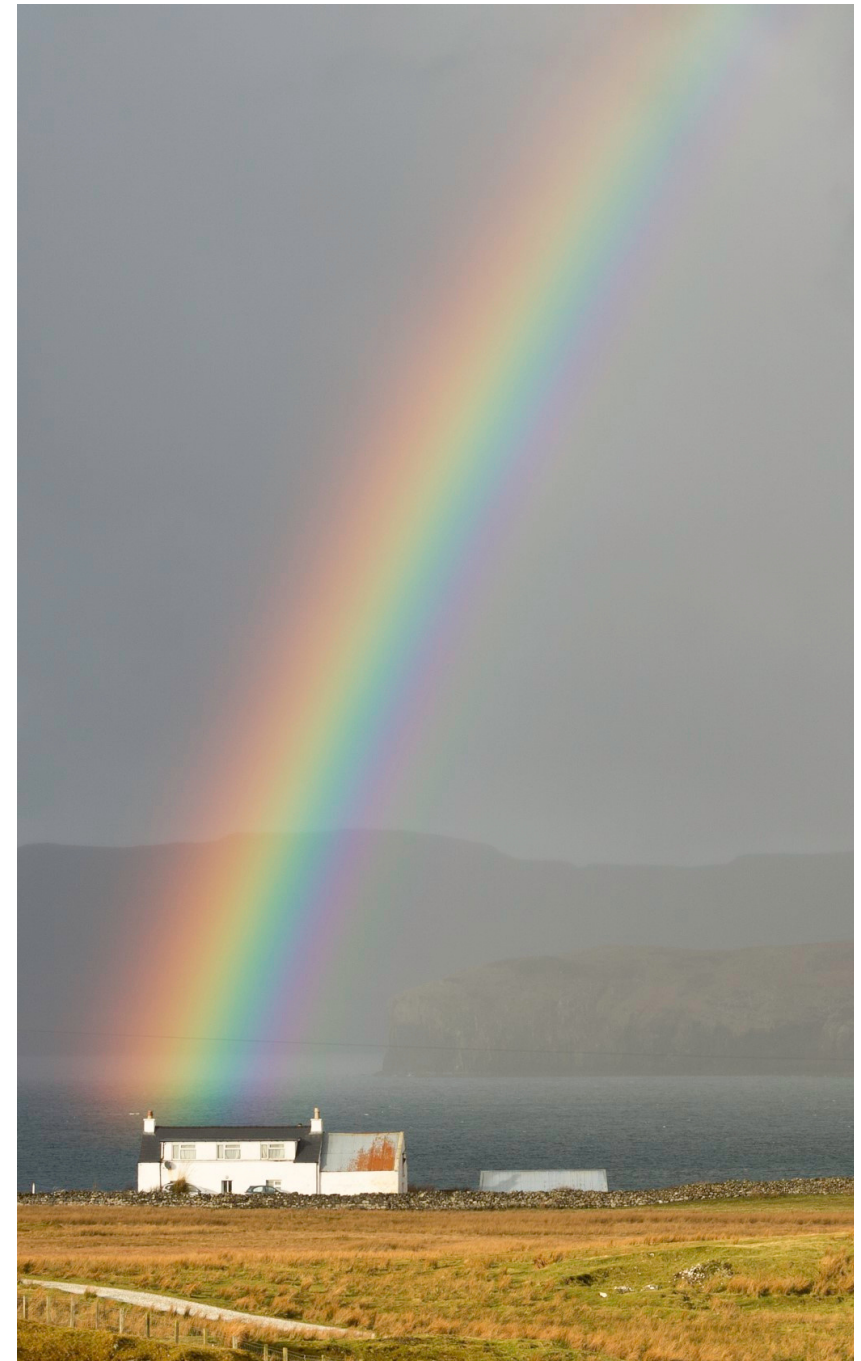
We have a **common goal** to work together for a better Struan.

All residents have access to the facilities, services and social activities that they need, including a **vibrant community hub** which also **welcomes visitors**.

These include **accessible housing** for **young** and **old** alike, and local **transport** and **communication** services that meet our needs and are **fit for the 21st century**.

Struan continues to **appreciate** and celebrate the **knowledge, skills and heritage** within our community and all those that have contributed to making it what it is today.

Figure 2: Vision for Struan in 2033 and beyond



How we will achieve our vision: Action Areas

To achieve this ambitious vision, over the next 10 years we have developed a plan for action that covers thirteen different areas of our life together, arranged according to five themes.

A 10 year-time frame could involve delivery of a wide variety of actions to deliver our goals – some of which we haven't even imagined yet! But from our perspective in 2023, we have come up with 31 potential initiatives that might help us deliver our vision, and these are laid out in more detail in chapter 4. Some of these are already in process, some of them remain just the germs of ideas for now. But all of them together represent the collective ambition and hopes of what we can aim to achieve in this time frame.

Action Areas by theme

1. Community Life Together
A The School
B Connecting to the land and sea
2. Housing
C Housing provision
D Zero-carbon homes for all
E Specialist accommodation
3. Transport
F Community transport
G Improved public transport
H Safer, improved transport network
4. Economy and Communications
I Enhanced, faster Broadband Service
J Local services
K Providing accommodation for local businesses
5. Organising Ourselves
L Making things happen
M Improving community communications

Table 1: Action Areas for the Plan

Starting our journey

Our focus will begin with the School and our aim to turn it into a vibrant community hub. As we start out, we want to build our confidence and relationships with one another as neighbours, making sure everyone feels they have a stake in what develops on the site.

To this end, we will launch the plan at a gathering at the School in February 2024.

For a season after this, we aim to build a regular rhythm of gathering at the School. possibly sharing food, to build our friendships and community together. At the same time, there will be an invite for residents to come and use the building for whatever purpose you have energy to make happen! Birthday parties, craft groups, a simple Community Cinema showing popular films with some popcorn and hotdogs, or pottering in the community garden are just some of the things that could easily happen in these early stages.

We hope to also run some practical “barn-raising” activities to enable us all to work on the fabric and interior of the building (for example painting): working together always helps build togetherness.



Overview of Actions

The following table lays out the 13 Action Areas and 31 Initiatives according to five overarching themes: Community Life Together, Housing, Transport, Economy and Communications and Organising Ourselves.

For ease of reference, actions can be referred to by their action area letter and/or reference number. So action A1 is “start using the school/hub as soon as possible” and action N26 is “sharing the load.”

Table 2: Overview of Actions

1. Community Life Together	3. Transport	5. Organising Ourselves
<p>A - The School</p> <ol style="list-style-type: none"> 1 Start using The School as soon as possible 2 Develop activity programme at The School 3 Research funding 4 Progress Asset Transfer Process 5 Renovate building 6 Men’s shed 7 Services for Tourists 8 Hire out space in Hall <p>B. Connecting to the land and sea</p> <ol style="list-style-type: none"> 9 Polytunnel and Allotments 10 Revitalise Jetties (Struan, Caroy) 	<p>F. Community transport</p> <ol style="list-style-type: none"> 17 Volunteer driving pool 18 Access (or partner with) existing North-West Skye Minibus service <p>G - Improved public transport</p> <ol style="list-style-type: none"> 19 Lobby to reinstate public bus service loop from Portree to Dunvegan, including Struan <p>H - Safer, improved transport network</p> <ol style="list-style-type: none"> 20 Lobby council to improve road maintenance 21 Lobby council to improve roadside pedestrian paths 	<p>L - Making things happen</p> <ol style="list-style-type: none"> 25 Community Development Worker 26 Sharing the load <p>M - Improving community communications</p> <ol style="list-style-type: none"> 27 Ongoing culture of consultation and opportunities for involvement 28 Continue to expand community email list 29 Set up a community newsletter online and offline 30 Encourage use of Community Website 31 Make full use of community noticeboard
2. Housing	4. Economy and Communications	
<p>C. Housing provision</p> <ol style="list-style-type: none"> 11 Set up Housing Working Group 12 Carry out housing needs audit for Struan. 13 Develop a finance system for younger people to get on the property ladder 14 Housing for the future <p>D - Zero-carbon homes for all</p> <ol style="list-style-type: none"> 15 Future-proofing our homes <p>E - Specialist accommodation</p> <ol style="list-style-type: none"> 16 Explore provision of specialist housing for older people 	<p>I - Improve Broadband Service</p> <ol style="list-style-type: none"> 22 Explore Community Broadband service <p>J - Local services</p> <ol style="list-style-type: none"> 23 Explore options for a Community Shop <p>K - Providing accommodation for local businesses</p> <ol style="list-style-type: none"> 24 Explore option of provision of work units/workspace 	

View the complete Community Action Plan

To read the complete Community Action Plan, please download it by using the following QR code.



Or visit the following web page:
www.struancommunity.co.uk/struan-action-plan



“A community action plan will set out what we intend to do in the next 5-10 years hopefully with all members of the community working closely together.”



Struan

Community

Action Plan

Executive Summary