



[Dun Beag broch](#)



# Struan Community Survey July 2023



# Struan Community Action Plan

## Table of Contents

1. OVERVIEW.....	2
Who replied to the survey?.....	3
Support for Community Stewardship of the Primary School.....	5
2. UNDERSTANDING THE ISSUES .....	6
Overview of survey responses.....	6
2.10 What do you like about living in the Struan area? .....	8
2.11 Is there anything you don't you like about being in Struan?.....	9
2.12 What are Struan's strengths, as a community and place?.....	11
2.13 What challenges are faced by the community right now?.....	12
2.14 What challenges will be faced by the community in the future?.....	13
2.15 What opportunities do you see in future that we can make happen by working together?	15
2.16 How do you currently find out what is going on in Struan? .....	17
2.17 How do you think communication can be improved so we can all know what's going on?	18
2.18 Do you support the idea of the community taking over the school site and buildings after it has been officially closed?	19
2.19 If you answered yes to the above, what purposes would you like to see the building and site put to?	20
2.20 If the community were to take over the school, how do you think we should ensure that the facility becomes a sustainable enterprise	22
A comparison of the percentage of responses that have been received for challenges faced in the short and long term.	23
3. CONCLUSIONS.....	25
Appendix 1 – Questionnaire .....	26

## 1. OVERVIEW

This report details the evidence base gathered in June 2023 from the community of Struan on the Isle of Skye, Scotland. The Survey was commissioned by the local Community Action Plan (CAP) Group, consisting of Struan Community Council (SCC), Struan Community Trust (SCT) and Struan Community Development Group (SCDG) alongside [Planning Aid Scotland](#) (PAS).

The Survey is intended as an initial step in an ongoing process to understand the needs and desires of the community in Struan, with a view to developing a full Community Action Plan in the next season.

The CAP survey asked the following questions:

1. What is your age?
2. What is your connection to the community in Struan?
3. For roughly how many years has Struan been a home for you?
4. What do you like about living in the Struan area?
5. Is there anything you don't you like about being in Struan?
6. What are Struan's strengths, as a community and place?
7. What challenges are faced by the community right now?
8. What do you think are the challenges that may be faced by the community in 5-10 years' time?
9. What opportunities do you see in future that we can make happen by working together?
10. How do you currently find out what is going on in Struan?
11. How do you think communication can be improved so we can all know what's going on?

Questions 5-9 are designed to supply a traditional SWOT analysis of the community: *Strengths* (Q6), *Weaknesses* (Q5), *Opportunities* (Q9), and *Threats* (Qs7-8).

The opportunity was also taken to survey support for the proposal to take ownership of the school into community hands, with the following questions:

12. Do you support the idea of the community taking over the school site and buildings after it has been officially closed?
13. If you answered yes to the above, what purposes would you like to see the building and site put to?
14. If the community were to take over the school, how do you think we should ensure that the facility becomes a sustainable enterprise (able to support itself through its own income generation)?

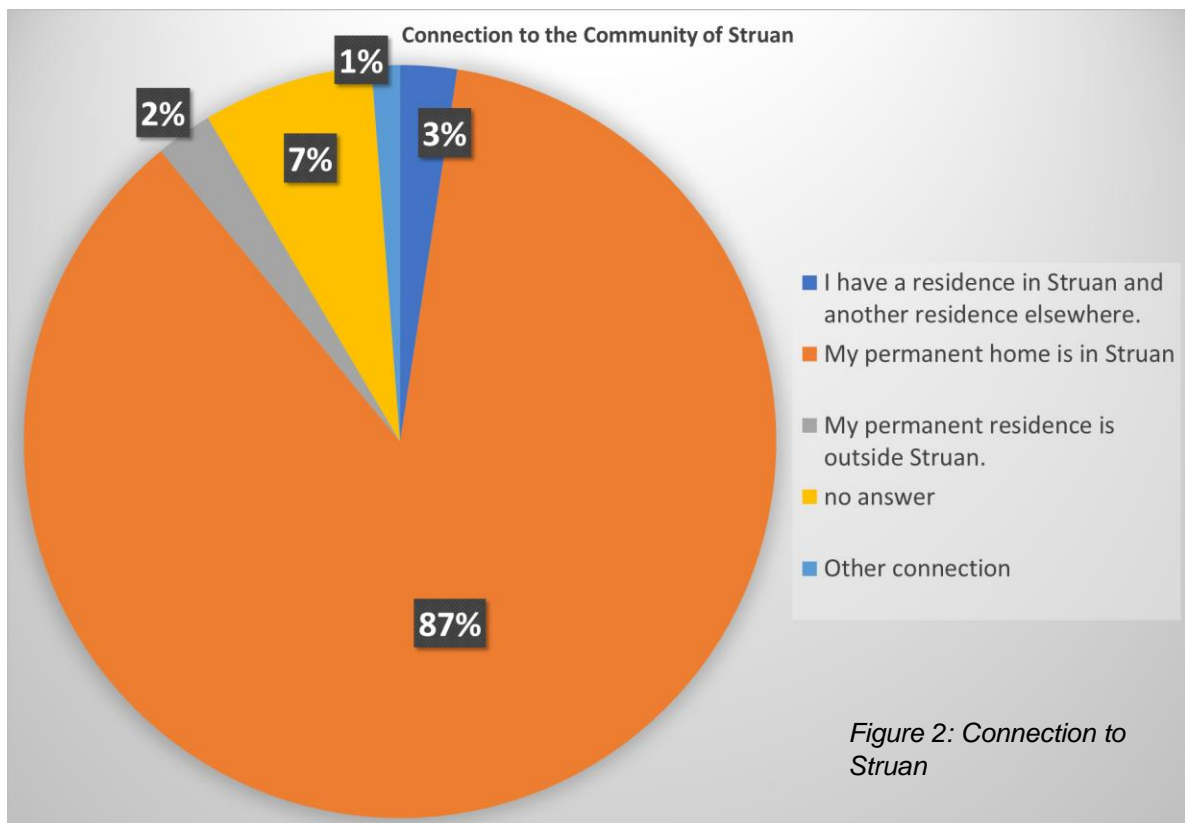
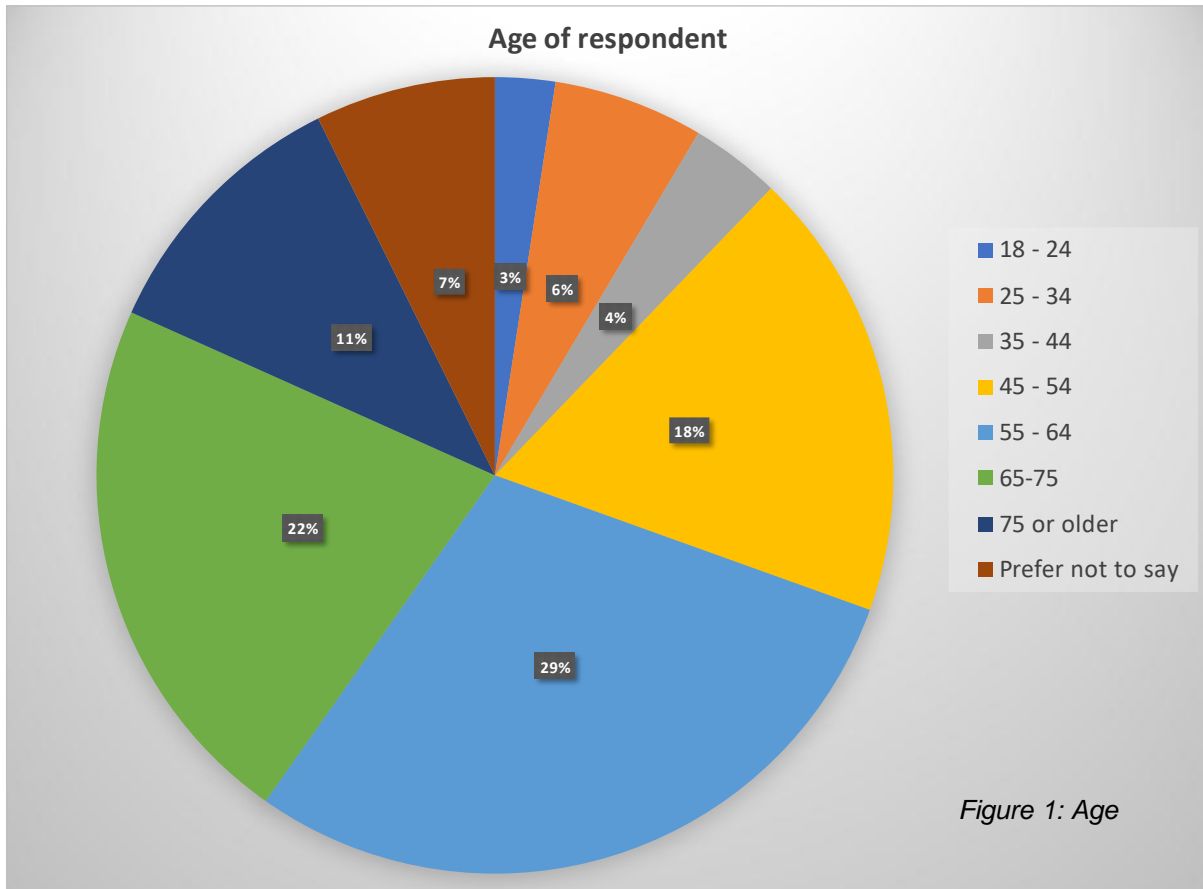
Every household received a paper copy with the option to fill out online.

The CAP group is delighted with the strength of response to the survey (closed 18th June 2023). 82 responses were received, with all but 17 completed online.

The pie charts on the following page break down the characteristics of respondents, by age and residency.

The response data for the CAP survey has been analysed according to the following categories, which are taken from the national planning tool called the [Place Standard](#): Moving Around; Public transport; Traffic and parking; Streets and spaces; Natural space; Play and recreation; Facilities and amenities; Work and local economy; Housing and community; Social contact; Identity and belonging; Feeling safe; Care and maintenance; Influence and sense of control. A final "other comments" has also been included.

## Who replied to the survey?



# Struan Community Survey 2023

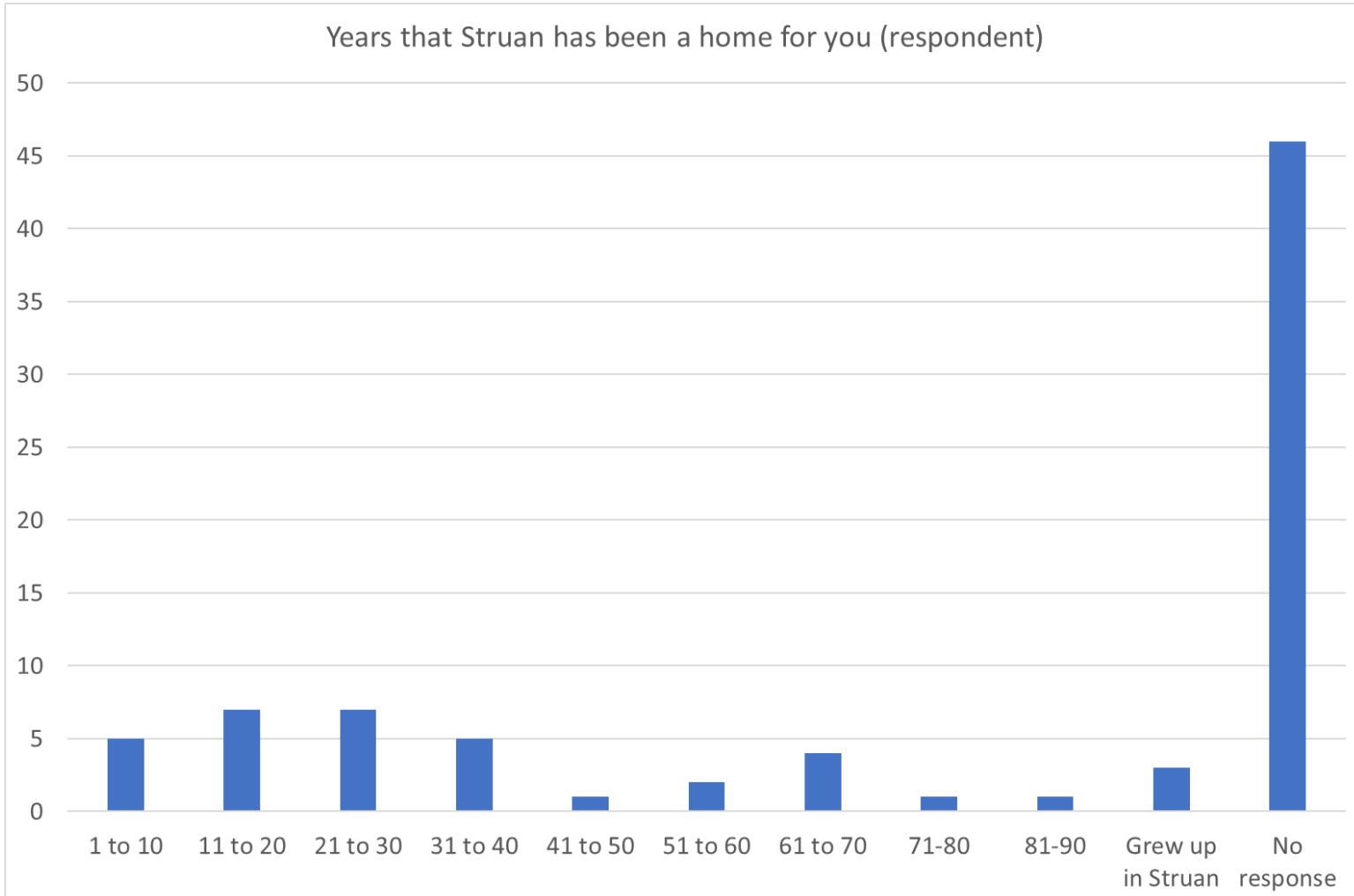
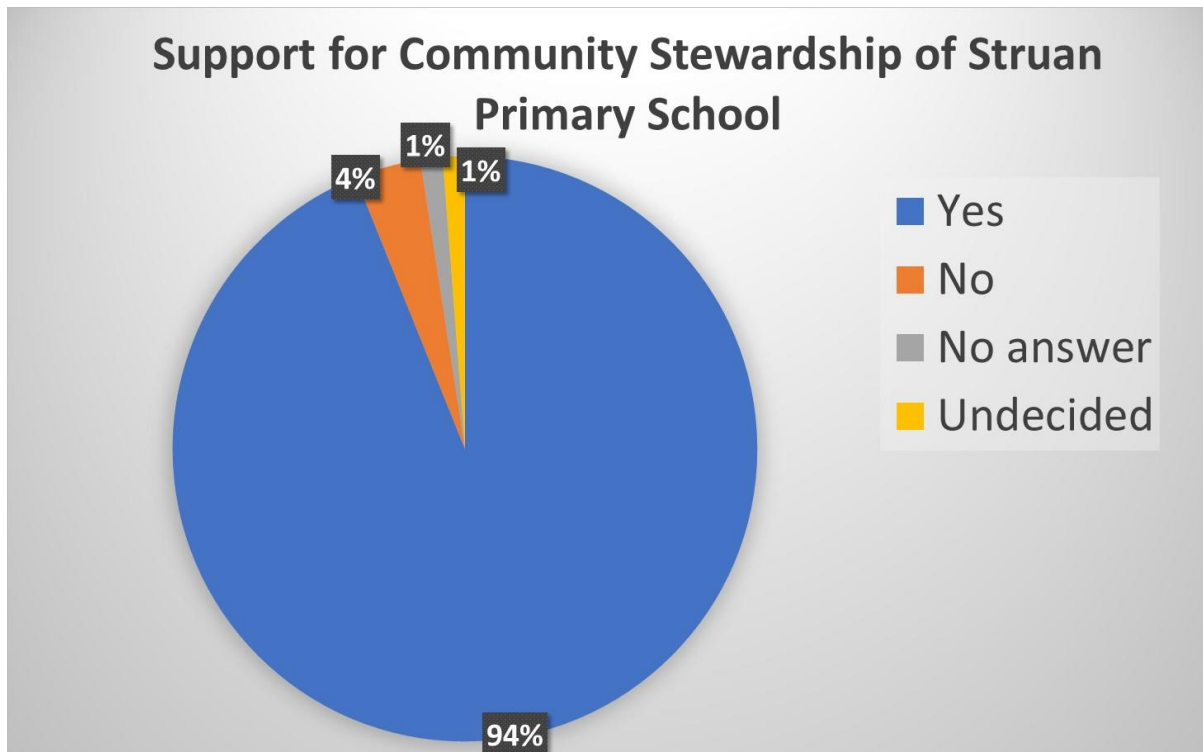


Figure 3: Residency

## Support for Community Stewardship of the Primary School

The following chart summarises responses to question 12: “Do you support the idea of the community taking over the school site and buildings after it has been officially closed?”



Two additional comments were made:

- “Not until the residents see feasibility in this project. This survey has not allowed space for a negative response. Can school be used at present e.g. history meetings, county dancing, gardening so on?”
- “It should have been retained as a school.”

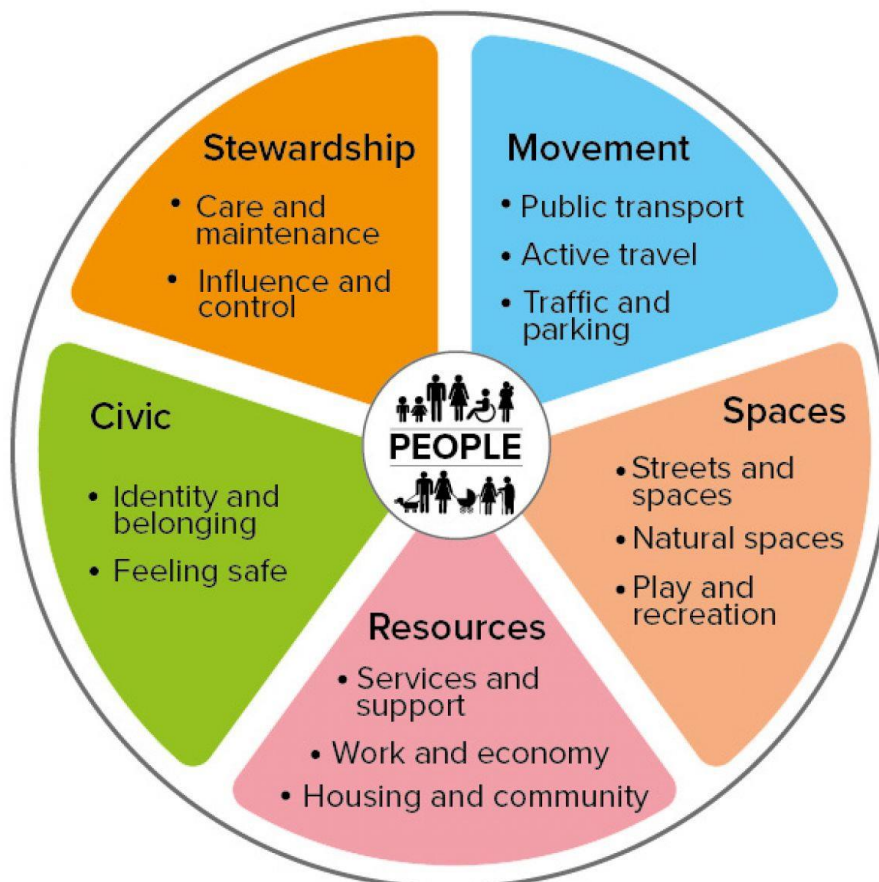
## 2. UNDERSTANDING THE ISSUES

### Overview of survey responses

2.1 The thematic framework of the [Place Standard](#) was used as the basis for analysing and making sense of the information returned in answer to question 4-9 of the survey. The Place Standard is a commonly used tool, commissioned by the Scottish Government, designed to help communities and stakeholders have conversations about how to change and improve their places. It enables thinking about the physical elements of a place (for example its buildings, spaces, and transport links) as well as its social aspects (for example whether people feel they have a say in decision making).

2.2 The 14 thematic categories of the Place Standard are Moving Around (Active Travel); Public Transport; Traffic and Parking; Streets and Spaces; Natural Space; Play and Recreation; Facilities and Amenities; Work and Local Economy; Housing and Community; Social Contact; Identity and Belonging; Feeling Safe; Care and Maintenance; Influence and sense of control. With the addition of a General Comment section, these have been used as the headline themes against which to organise the responses.

## Place and wellbeing outcomes



The principles of equality, net-zero emissions and sustainability underpin all of these themes, and all themes should be embedded in policy and action.

- 2.3 Under each of the Place Standard Themes, responses have then be broken down further into sub-themes or topic area for ease of understanding.
- 2.4 Using an established framework to make the initial categorisation ensures a methodical approach to the analysis (this is known as a *deductive* approach to analysis). It makes it easier for funders and stakeholders to understand what it being said because the tool is well-known across Scotland. It links the information to an established widely used research vocabulary.
- 2.5 Further sub-categories have been established within these Action Areas defining key priorities that emerged from the data. These priorities were carefully chosen to make sense of the data as it presented itself (this is known as an *inductive* method of analysis).
- 2.6 Overall, an *inductive-deductive* approach has been taken to analysing the data, to enable ease of understanding for the community coupled with familiarity of themes for wider stakeholders such as funding bodies, the local authority and the Scottish Government.
- 2.7 Columns are also provided to indicate the number of times a similar statement was made (count) and the consequent response as a percentage of all the statements made.<sup>1</sup>
- 2.8 The most significant responses for any given question are indicated by highlighting the higher percentage response rates in red in the last column.
- 2.9 Retaining the detail of people’s responses was also considered important. Some of the following tables therefore look quite dense when first viewed. If reading on a computer, we recommend using the zoom function to enlarge the writing where required.

---

<sup>1</sup> Please note the following for interpretation purposes, using the response table for question 4 on the next page as an example:

It can be said that 2 of the 82 respondents to the survey said (under the Moving Around theme) that “the number of walks in the area” was something they like about living in the area. Similarly 46 people said (under the Natural Space theme) that scenery was important to them. However, the ‘response rate’ is based on the overall number of statements made (204), not the number of respondents (82).

## 2.10 What do you like about living in the Struan area? (Question 4)

Topic Area	What do you like about living in the Struan area? Please tell us up to 3 things.	Count	Response rate (%)
<b>MOVING AROUND</b>			
Active Travel Routes	The number of walks within the area, and easy access to them.	2	1.0
<b>PUBLIC TRANSPORT</b>			
Road connections	Location. Good for travelling around Skye. Easy commute, Struan is perfectly located within easy reach of Portree, Carbost and Dunvegan, Not too remote, Rurality, but close enough to Portree to commute, on main road	16	7.8
<b>NATURAL SPACE</b>			
Scenery	The views, beautiful landscape, scenery	46	22.5
Sea & Coast	Proximity to the sea	4	2.0
Pollution	Fresh air	2	1.0
Wildlife	Wildlife.	1	0.5
<b>PLAY AND RECREATION</b>			
Young people	Great place to bring up kids (probably wouldn't live here now if I had kids at school)	3	1.5
<b>FACILITIES AND AMENITIES</b>			
Services	Clean pure drinking water	2	1.0
Services	It has a Post Office!	1	0.5
Connectivity	It's close to amenities but not too close to be overwhelming,	5	2.5
Health	Excellent medical help in Dunvegan	1	0.5
<b>WORK AND LOCAL ECONOMY</b>			
Crofting	Crofting community, agriculture	3	1.5
<b>HOUSING AND COMMUNITY</b>			
Housing Development	Not too many new builds (large ones) in the immediate area	1	0.5
<b>SOCIAL INTERACTION</b>			
Community Spirit	The community when we have a chance to get together, great neighbours, friendly, supportive but not huge community, still a relatively local community with good community spirit. No obvious divides with most incomers.	42	20.6
Community Spirit	Close to family	12	5.9
Community Spirit	Local skye people. The native people are simply the best.	2	1.0
Clubs/Events	Good involvement in community events	2	1.0
<b>IDENTITY AND BELONGING</b>			
Community Heritage	Culture - I feel a direct sense of connection to the community, history and culture of the place. it's my homeland/home village, shared heritage, family history. I live where my parents were born and brought up. I live on a croft that has been in my family for over 100years. Struan is full of characters of all generations trying to keep old traditions and values alive whilst moving with the times.	13	6.4
<b>FEELING SAFE</b>			
Atmosphere	Peaceful place to live, Calm, Wonderful, largely unspoilt, rural environment.	34	16.7
Crime	Safe, and free from crime	6	2.9
<b>GENERAL COMMENTS</b>			
Tourism	Relatively untouched by the tourist trade	3	1.5
General Comment	The way of life that the place has to offer.	1	0.5
General Comment	Sunshine showers and simplicity	1	0.5
Demographics	Good healthy mix of young and old	1	0.5
Total statements made		204	100

## 2.11 Is there anything you don't you like about being in Struan? (Question 5)

Topic Area	Is there anything you don't you like about being in Struan?	Count	Response rate (%)
<b>MOVING AROUND</b>			
Active Travel Routes	Lack of safe public footpaths along roads	3	1.4
<b>PUBLIC TRANSPORT</b>			
Bus	Lack of public transport service (eg to Portree or Broadford (or even Dunvegan and back), (Why cant the Portree --Dunvegan bus carry on to Struan to turn around in. We have an aging population who may have to stop driving.	17	8.0
Community Transport	No community bus	1	0.5
<b>TRAFFIC AND PARKING</b>			
EV charging	Absolutely no ev chargers even with wind turbines proposed still no chargers in the pipeline.	1	0.5
Speeding	Lack of speed restriction through Ose township	1	0.5
Parking	Bad parking for and by visitors in main public space (eg for bog myrtle), parking at the café damaging the grass. Parking facility at Dun Beag is very dangerous - visitors cross the road on a bend.	5	2.3
<b>STREETS AND SPACES</b>			
Appearance	Appearance of village, the village isn't well kept, some buildings look "tired", existing paths overgrown, roads not swept, Needs an overall tidy up of area to look better.	2	0.9
Heritage	Struan House - eye-sore to locals + visitors, danger to those accessing. Need to develop plan for the future of this Listed Building	1	0.5
<b>NATURAL SPACES</b>			
Scenery	Wind turbines, Views spoiled by wind turbines	3	1.4
<b>FACILITIES AND AMENITIES</b>			
Connectivity	We are too far from Dunvegan, Portree or Minginish to use their facilities earning we are isolated from each other.	1	0.5
Services	Lack of amenities (general), there isn't much locally, you have to go to Portree, Dunvegan or Carbost,	5	2.3
Services	No school.	4	1.9
Services	Inadequate access to fuel - having to travel 8 miles for fuel	3	1.4
Services	no decent pier for launching boats etc (tide dependant)	1	0.5
Services	Lack of deliveries available in area	1	0.5
Shops	Lack of shop with basic necessities shop (that caters for everyday needs e.g. milk, butter, cheese, eggs), tatty (dangerous roof tiles) not-for-purpose shop. Lack of resources- other than the post office (which has limited opening hours) you need to go to either Dunvegan or portree for even basic provisions. This is annoying from both a practical and social point of view. When there was a well stocked shop and fuel station in Struan, you used to regularly see and talk to other local people.	35	16.4
Restaurants & Pubs	Lack of pub	5	2.3
Community Hub	Lack of central meeting place (community hub) i.e somewhere to hold groups	20	9.4
Digital	Broadband. The total lack of an internet/fibre broadband in an age/area where we need to be connected. one of the two poorest areas for broadband (according to our Provider and engineers, to whom I have spoken). we need at least 100Mbps affordable access for everyone.	30	14.1
Digital	Very poor mobile coverage.	3	1.4
<b>WORK AND LOCAL ECONOMY</b>			
Employment	No local jobs.	1	0.5
Trades	Severe lack of tradesmen.	1	0.5
Cost of Living	Cost of electricity is far too high for an area with massive renewable potential, and planned development (we should be getting free electricity or 100% funded system such as solar panels). Not Struan in particular but it is becoming increasingly difficult to live on Skye with overinflated bills, groceries etc on top of a cost of living crisis	2	0.9

HOUSING AND COMMUNITY			
Affordable Housing	Lack of affordable housing. - lack of housing to keep the younger generation, Young Locals unable to purchase homes because they are way over priced, Affordability for housing for younger folks here has gone crazy and there seems little hope of young families being able to live here, and without them there's no future for this community..this leads to de-population, barrier to youth/first time buyers and incomers that might have skills/trades.	8	3.8
Holiday Homes	Housing stock used as holiday homes by absent landlords	1	0.5
SOCIAL INTERACTION			
Clubs/Events	Lack of community events. That it is difficult to be a community when we can't hold activities locally beyond the gala, with the Crofters Bite we see so much more connection is possible.	5	2.3
IDENTITY AND BELONGING			
Community Spirit	Lack of community spirit	1	0.5
Community Voice	Fear of loss of local identity, there is becoming a "them and us" undercurrent sadly. Potential impact on balance of power in local decision-making	10	4.7
FEELING SAFE			
Lighting	Streetlights	1	0.5
CARE AND MAINTENANCE			
Road Maintenance	The state of the roads and them not being classed as main roads so not supported that well in the winter. Potholes (eg in around the estuary near Gesto). The main link to Portree is via the hillroad. I am thankful that the surface has been improved but further work is needed and better visibility on this road. Passing places, clearly marked and rushes cut back.	20	9.4
Litter & Dog Mess	Litter, (eg detritus washed up, and farmers discarding sheep feed bags in the hedge row).	2	0.9
Public Toilets	Lack of public toilets	4	1.9
GENERAL COMMENT			
General Comment	There is nothing I don't like about Struan	4	1.9
Overtourism	Overtourism	3	1.4
Demographics	Lack of younger generation, mainly older/ aging population and retired 'incomers'.	2	0.9
General Comment	Struan feels forgotten by the Council	1	0.5
General Comment	midgies	1	0.5
General Comment	the caravan near the phone exchange - unsightly	1	0.5
Demographics	Young people leaving and not returning.	1	0.5
General Comment	It doesn't have the feeling of a village, more just a settlement of houses,	1	0.5
General Comment	Too fragmented to really have strengths currently, lots of ability across the community but really difficult to come together through council, trust or other groups	1	0.5
Total statements made		213	100

## 2.12 What are Struan's strengths, as a community and place? (Question 6)

Topic Area	What are Struan's strengths, as a community and place?	Count	Response rate (%)
<b>TRAFFIC AND PARKING</b>			
Road Connections	It's location - reasonable access to services in Portree, easy for commuting	4	2.4
Parking	The centre of Struan is on the main road with ready made parking at the shop / café and more at the old school	1	0.6
<b>STREETS AND SPACES</b>			
Heritage	The broch, history, places of archaeological interest	7	4.2
<b>NATURAL SPACE</b>			
Scenery	Beautiful location. Views	18	10.9
Sea & Coast	Jetty access, proximity of the sea	2	1.2
Wildlife	Amazing wildlife.	1	0.6
<b>PLAY AND RECREATION</b>			
Recreation	Great for outdoor activity	1	0.6
<b>FACILITIES AND AMENITIES</b>			
Services	Facilities - Crofters Bite (crofters bite puddings!), Bog Myrtle (x2), There is still a shop - "Bog Myrtle is Bog Myrtles, friendly and an ideal place to meet friends."	5	3.0
Services	Post office (although limited hours)	3	1.8
Services	Still two churches locally.	2	1.2
Community Hub	Opportunity to benefit from the old School premises.	1	0.6
Eating out	fantastic places to eat	1	0.6
<b>WORK AND LOCAL ECONOMY</b>			
Tourism	It is on a main route so gets plenty through traffic (there just needs to be a reason to stop). on a main road so is able to benefit from passing tourist trade. Beautiful views in many places which draw visitors to stop. Continued increase in Tourism - potential for local businesses. We have the potential to offer alot for visitors, with the right facilities. Tourist accommodation	8	4.8
Crofting	Crofting	1	0.6
Land	Space available for small-scale development	1	0.6
Trades	Good local business owners offering professional services	1	0.6
Trades	A very helpful joiner	1	0.6
<b>SOCIAL INTERACTION</b>			
Networks/Support	Generous, Supportive, Tight knit local community who help each other out, We rally around each other if there is a need for support of any kind.	22	13.3
Clubs/Events	Gala	1	0.6
<b>IDENTITY AND BELONGING</b>			
Citizenship	Common Good - A community that genuinely wishes common good, & active to that end. There are people who live locally who take a pride in looking after the area eg well kept war memorial. Locals having a get up and go attitude, Every one cares about keeping it tidy and friendly, When we do get together we can do it 100% well. ie Platinum Jubilee & Remembrance Way. Last year we did a community event for the Queens Jubilee, I went round our area with flyers and gauged support for an afternoon tea. Everyone was so in favour for it and offered help of any kind. The day was a huge success because of community involvement. It brought the community together and it was lovely to see people interacting with each other having not seen each other in a social setting for some time. Struans strength is it's community: local events are really well supported. You can't buy that. Community are keen to support any community events held.	24	14.5
Welcoming	Friendly local faces/families	17	10.3
Welcoming	Mixed community, Opportunity to create a cohesive community; That there is a mix of people who were born here, and those who have 'come-in' ; The sense of community and it's acceptance of new residents and visitors alike. I think it used to be a place where everyone pulled together, and I hope will be again..	5	3.0
Citizenship	Hidden broad skill set? Talented people. there is a great deal expertise to tap into within the community.	3	1.8
Community Heritage	Struan still has a crofting community the heritage of economy should be cherished and protected	3	1.8
Community Groups	Good core of people on Community Council and Struan Community Trust who are genuinely interested in Struan's development and progress.	2	1.2
Citizenship	Desire to improve community area for younger generation	1	0.6
Citizenship	Many local younger people interested in maintaining that community. There are young people taking an active interest in local groups	1	0.6
Community Spirit	Resilient.	1	0.6
<b>FEELING SAFE</b>			
Crime	Safe, very low crime	5	3.0
Raising Children	It is a great place to raise children.	1	0.6
<b>INFLUENCE AND SENSE OF CONTROL</b>			
Funding	Well supported by funding from the wind farm	4	2.4
Community Voice	Community engagement. BUT: "Population numbers do not warrant involvement. No need for this action plan as one was done recently and to little avail! No need for CAP. 4 groups are far too many in such a small area!". Huge potential to be the best place to live on Skye (but no cohesive plan to achieve this potential).	3	1.8
Funding	We are already very lucky as a community as we have a means to support any projects that may arise also all of the residents have had access to a hardship funds throughout the last few difficult years if needed.	1	0.6
<b>GENERAL COMMENT</b>			
General Comment	No answer	6	3.6
General Comment	Peace and quiet,	3	1.8
Village size	not over crowded, low population density	2	1.2
General Comment	We are not as integrated in the community as we would like to be, so perhaps aren't in a position to comment	1	0.6
Overtourism	Not a tourist hotspot - we need to maintain this.	1	0.6
Total statements made		165	100

## 2.13 What challenges are faced by the community right now? (Question 7)

Topic Area	What challenges are faced by the community right now?	Count	Response rate (%)
<b>MOVING AROUND</b>			
Active Travel Routes	Lack of safe roadside walking. Lack of quality pathways	2	1.0
<b>PUBLIC TRANSPORT</b>			
Bus	Public transport (lack of)	10	5.0
EV charging	no ev chargers planned	1	0.5
<b>NATURAL SPACE</b>			
Scenery	Area polluted with bracken = health hazard + destroying scenery	1	0.5
Scenery	Wind turbines and huge electricity sub-stations impacting local landscape character	1	0.5
<b>FACILITIES AND AMENITIES</b>			
Digital	Broadband, Very poor and in some cases non existent digital communication facilities for people unless they can afford to buy things like Starlink, which effectively prevents most people from being able to work from home. Most people expect this to be available wherever they live these days. we've had to install Starlink but this is expensive and won't be an option for all. (we only get 35mbps)	20	9.9
Community Hub	Lack of community hub (and little prospect of this changing for years rather than months). Obtaining and running the school in a way that the community wants.	17	8.4
Services	Lack of amenities (Inadequate shop/fuel)	9	4.5
Services	School - no educational facilities, Lack of childcare for nursery children and now no primary school.	4	2.0
Services	Closure of primary school, no primary school for potential young residents	2	1.0
Services	Facilities for elderly who may benefit from more day-to-day interaction, Isolation for older folk/ those that dont drive	2	1.0
Services	Considerable number of houses - not on public water supply.	1	0.5
Services	Loss of remaining services.	1	0.5
Services	Lack of local community run stores.	1	0.5
Services	None, other than the shop and post office not being fit for purpose.	1	0.5
<b>WORK AND LOCAL ECONOMY</b>			
Windfarm	Windfarm proposals, especially the numbers involved and the money issue (how much & how to use it wisely). Differences of opinion regarding windfarm development and lack of transparency with developers and their plans.	9	4.5
Employment	How to agree to spending the expected inflow of money to the community.	7	3.5
Tourism	Employment - Very few job opportunities.	7	3.5
Cost of living	Tourism infrastructure - Lack of facilities for tourists e.g public toilets, facilities to match the volume of tourists,	4	2.0
Business Start-ups	Rising cost of living	4	2.0
Tourism	Lack of opportunity for new business i.e. premises or land.	1	0.5
Windfarm	The state of the roads impacting on tourism	1	0.5
Windfarm	Windfarm progression at industrial levels.	1	0.5
Windfarm	possibility of windfarm disruption	1	0.5
<b>HOUSING AND COMMUNITY</b>			
Affordable Housing	Lack of affordable housing for locals and their families. Also need for affordable homes e.g. for key workers.	26	12.9
Attracting Families	Attracting young families to the area and kids, youth facilities needed. Keeping our young people in the area	20	9.9
Affordable Housing	Affordable private houses to rent long term	1	0.5
Holiday Homes	Second home ownership	1	0.5
Holiday Homes	Homes for short-term let	1	0.5
Housing Development	Too many new buildings being built	1	0.5
<b>IDENTITY AND BELONGING</b>			
Citizenship	Getting everyone involved.	1	0.5
Community Groups	Explore limiting number of community groups, encourage participation and transparency	1	0.5
Community Groups	Maybe there's a bitty too many folks, groups involved in our wind-turbine project	1	0.5
Welcoming	getting the right mix of keeping the old ways and community spirit whilst embracing new people and new ways.	1	0.5
Welcoming	Keeping Struan as it always has been, a tolerant Highland village.	1	0.5
<b>CARE AND MAINTENANCE</b>			
Road Maintenance	Road Maintenance/Infrastructure	12	5.9
Litter & Dog Mess	Marine/shore line litter,	1	0.5
Litter & Dog Mess	Trying to keep everything tidy	1	0.5
<b>INFLUENCE AND SENSE OF CONTROL</b>			
Community Voice	Self interest and competing interests, lack of community cohesion, apathy and disinterest from some of the community to get involved. Division within the community. Maintaining a coherent community. New developments causing mixed views to be voiced. wind farm developments are potentially divisive, limited trust and join up. No major challenges other than trying to work together to figure out and then agree on what our community needs or doesn't need!	8	4.0
Support and Funding	Where the money gets spent from the wind farms. The substantial large sums of Community Benefit in the future and how best to administer these funds.	5	2.5
Community Voice	Ensuring that the community in its entirety is always democratically represented.	1	0.5
Community Voice	Getting balance between necessary tourism & local priorities which may not always be wholly compatible.	1	0.5
Local Collaboration	Lacking of vision, ambition and leadership.	1	0.5
Support and Funding	Lack of funding from council	1	0.5
Support and Funding	Lack of people and support from council	1	0.5
<b>GENERAL COMMENT</b>			
Demographics	Aging demographic	11	5.4
Total Statements made		<b>202</b>	<b>100</b>

## 2.14 What challenges will be faced by the community in the future? (Question 8)

Topic Area	What challenges will be faced by the community in the future?	Count	Response rate (%)	
<b>PUBLIC TRANSPORT</b>				
Bus	Need for weekly bus service ( for those no longer able to drive, no bus route will mean elderly/ none car users will not be able to access nearby villages/medical facilities	11	6.3	6.3
EV charging	Government policy on electric cars means more public charging points are a necessity.	1	0.6	0.6
<b>NATURAL SPACES</b>				
Scenery	Environmental blight from SSE power plan and wind energy	1	0.6	0.6
<b>PLAY AND RECREATION</b>				
Young People	youth facilities needed	2	1.1	1.1
<b>FACILITIES AND AMENITIES</b>				
Digital	Poor broadband - in ability to access school, health, WFH	7	4.0	4.0
Services	Closure of shop/ongoing lack of appropriate stock	5	2.8	2.8
Health	Having to put elderly in care on mainland over 100 miles away,new hospital but no scanner as promised. Lack of care facilities/services for the 65+ (retired community) will only lead to their departure as well.	4	2.3	2.3
Community Hub	lack of venue for community events	3	1.7	1.7
Services	Inadequate facilities for the community	3	1.7	1.7
Health	Health service, Lack of NHS workers - GPs, Hospitals, etc.	2	1.1	1.1
Health	Lack of young people to care for the elderly.	2	1.1	1.1
Community Hub	If funding is in place, maintaining the school and the running of it as a community hub.	1	0.6	0.6
Connectivity	As services become more centralised the village becomes more remote and you have to travel further for basic services.	1	0.6	0.6
Health	Retirement of medical professionals at Dunvegan	1	0.6	0.6
Services	Abandoned churches - lack of ministers - lack of congregations.	1	0.6	0.6
Services	no operating school in the village	1	0.6	0.6
Services	Inadequate facilities to support visitors and gain some benefit for the community from them.	1	0.6	0.6
Services	Ongoing issues with infrastructure	1	0.6	0.6
<b>WORK AND LOCAL ECONOMY</b>				
Employment	Lack of opportunities for young local people and others	6	3.4	3.4
Cost of living	Higher fuel prices, higher charges in general,	3	1.7	1.7
Cost of living	How to be rid all of all the windfarms and sub-stations and pay our electric bills (and still wondering why they are higher than our southern neighbours especially when we are producing a huge amount of electricity back into the grid with all the wind turbines on the island?!!)	3	1.7	1.7
Windfarms	Potential negative impact Windfarms: Industrialisation of the area by wind farms, disruption during build of wind farms and Skye reinforcement project, Complete collapse of tourism as a result of gridlock during wind farm construction.	3	1.7	1.7
Tourism	Perhaps tourism will have declined due to high prices & lack of infrastructure to cope with numbers coming at present.	2	1.1	1.1
Employment	The turbine project will increase traffic & work personel. It could be a good thing maybe a bad thing.	1	0.6	0.6
Employment	Less locals, so that means less folk working because anyone who moves in seems to be retired.	1	0.6	0.6
<b>HOUSING AND COMMUNITY</b>				
Affordable Housing	Lack of affordable housing to bring younger people/families to the area	26	14.8	14.8
Attracting Families	Decline in the younger generation and their families trying to create a home in the area.	16	9.1	9.1
Affordable Housing	Somewhere for the older generation to live comfortably/care homes. potentially resulting in individuals having to be placed in nursing homes some distance from their families/ friends or family members providing care where no community services are available.	3	1.7	1.7
People Mix	A concern to ensure a good mix of generations and backgrounds in the community	3	1.7	1.7
Holiday Homes	Continued decline in population and increase in non-resident property owners (second homes and holiday lets)	2	1.1	1.1
Housing Development	Overdevelopment (eg worried about light pollution with more houses)	2	1.1	1.1
Affordable Housing	Rising house prices/ difficulties when trying to build.	1	0.6	0.6

SOCIAL INTERACTION			
Networks/Support	Isolation of less active community members	1	0.6
IDENTITY AND BELONGING			
Community Heritage	The Gaidhlig roots and history of the community being further diluted.	3	1.7
INFLUENCE AND SENSE OF CONTROL			
Support and Funding	Deciding how to spend the increased wind farm monies in the area to the benefit of the majority - don't want to see the opportunity wasted. Risk of incoming Wind Farm Community Benefit causing divides in the community. Windfarms and the use of funds derived from their construction.	5	2.8
Community Voice	Potential for division within the community. Ensuring fair representation of all voices. Getting the community to unite and come together.	4	2.3
Community Voice	Concern of imbalance of incomer vs local voices	2	1.1
Overtourism	Not letting area become too tourist focussed	2	1.1
Support and Funding	Getting enough sponsors to sustain development. forgotten or under investment from Highland Council, NHS and similar bodies. Hardly a penny being spent by council on local infrastructure.	2	1.1
Community Voice	De-population will only weaken the community and its voice.	1	0.6
Support and Funding	Ensuring the local authority doesnt reduce any services to the community as a result of windfarm income to the area being an excuse to suggest we pay for ourselves for should be a provided service	1	0.6
GENERAL COMMENT			
Demographics	Aging population	22	12.5
General Comment	The same challenges as there are now.	7	4.0
Climate Resilience	Climate change is also going to have increasing impact on our fragile environment.	2	1.1
Demographics	De-population	2	1.1
Energy	Energy provision	1	0.6
Housing Quality	Poorly insulated homes	1	0.6
Total Statements made		176	100

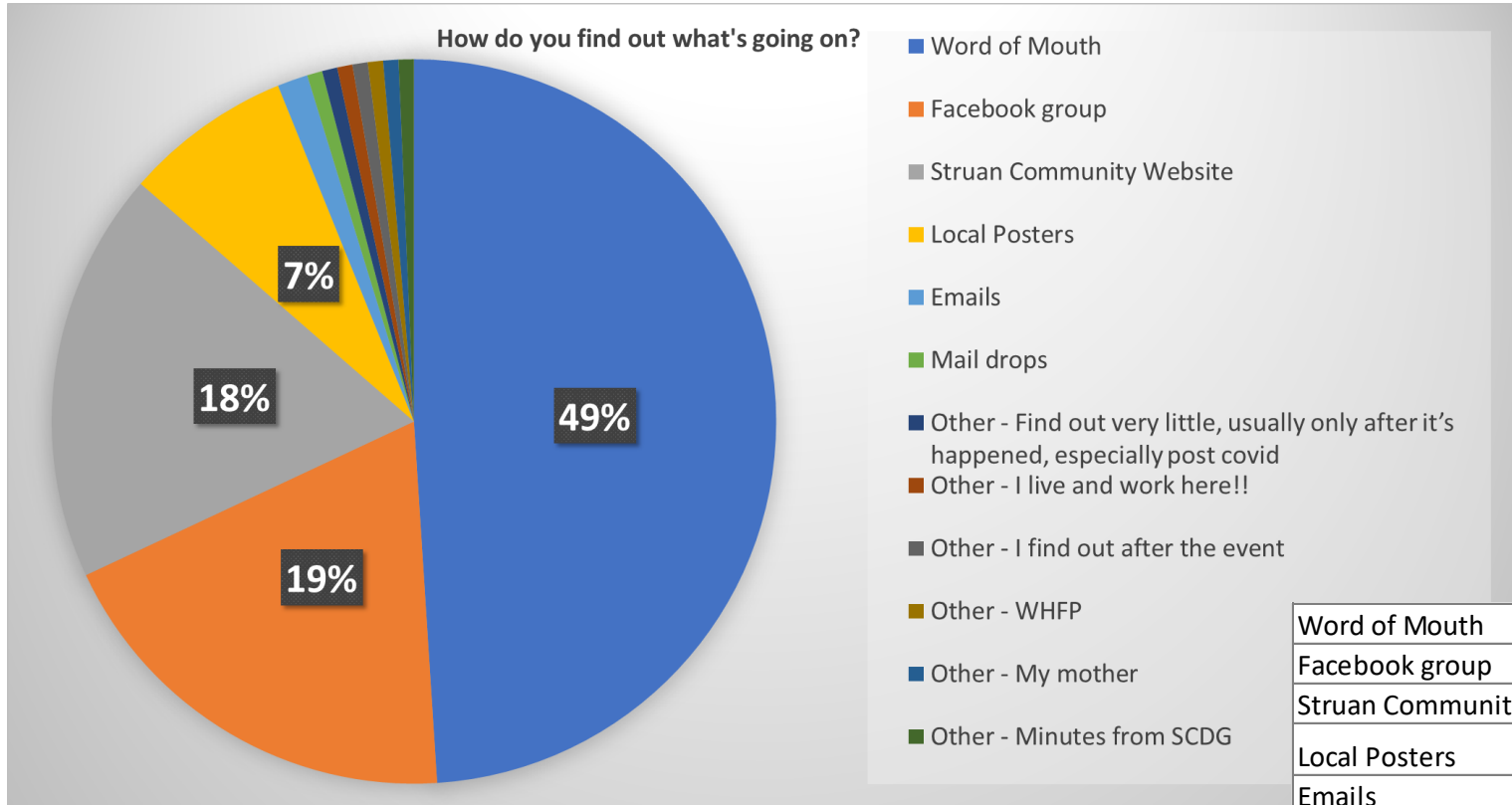
## 2.15 What opportunities do you see in future that we can make happen by working together? (Question 9)

Topic Area	What opportunities do you see in future that we can make happen by working together?	Count	Response Rate
<b>Moving Around</b>			
Active Travel Routes	Safe pedestrian paths (eg A safe walkway from the causeway to Ose, Good safe walking paths from the Dun Beag to the causeway that could be used by prams and push chairs)	3	1.8
<b>Public Transport</b>			
Bus	Public transport into the village	2	1.2
Community Transport	Community minibus	1	0.6
<b>Traffic and Parking</b>			
Parking	More designated parking for visitors, Tidy up existing car park at Dun Beag Broch	2	1.2
<b>Play and Recreation</b>			
Community Garden	A community garden - I enjoy growing my own fruit and vegetables and would be happy to give my time or donate seeds and seedlings to a community garden which could then either sell or donate to residents in the community	2	1.2
Recreation	Improve fishing in the area.	1	0.6
<b>Facilities and Amenities</b>			
Community Hub	Community centre/hub. (e.g. A well-utilised community hub with diverse benefits, available year round, A community hub/ centre for local activities and meetings, even cafe.... with facilities and activities for all ages, for gatherings of all kinds. Secure community ownership of the school for community centre. Creating a safe and comfortable meeting space for all of us where we can have social occasions and bring our vulnerable community members to the heart of the village for social, mental health and entertainment purposes. Possibly a nursery/childcare centre).	35	21.5
Shops	A good well stocked community shop. Community shop/café. Hopefully in the future the shop and PO can have more produce available to sell. With the benefit of windfarm money, could there be an increase in shop opening hours and goods for sale.	14	8.6
Care Homes	Care facilities for senior citizens. Establishment of a care home within the community boundaries.	3	1.8
Services	Improvements to infrastructure for the good of locals and tourists alike.	3	1.8
Services	Create facilities the pier for locals as well as visiting yachts etc - pontoon/toilet/showering facilities/honesty shop with essentials. Development of the jetty area and provision of pontoons. Improved access to the sea. A marina might be too ambitious but a boathouse next to a properly constructed/situated jetty would be useful with changing facilities, showers etc. Could be expanded to include a cafe/bar.	3	1.8
Attracting Families	Creating amenities that will retain and attract young families.	3	1.8
Services	Public toilet	2	1.2
Services	perhaps nursery/school again	2	1.2
Eating out	Pub	1	0.6
Services	Mains Water services and supply for those still depending on private supply.	1	0.6
Eating out	better cafe/restaurant/bar	1	0.6
Services	public sewer	1	0.6
Services	Credit union might be worth considering to provide a range of options. Could also be a vehicle to deliver shared ownership/land purchase scheme through an annual grant from the wind farm community benefit.	1	0.6
<b>Work and Local Economy</b>			
Digital	Upgraded broadband facilities, pressure on BT to improve communication infrastructure	7	4.3
Employment	Increased employment, create jobs and opportunities for all ages including local youngsters. Small-scale employment opportunities.	6	3.7
Tourism	Visitors centre and café. Improve tourism experience, give a reason to visit and to stay a bit longer in the area, slow tourism is the buzzword at the moment. Better facilities would make them stay in area longer, this could include campervan facilities, car charging points, public toilets, walking and cycle paths.	4	2.5
Crofting	More opportunity for younger people to experience/ be involved in agricultural activities. At the moment if you dont have a friend or family members in the industry its difficult to experience it.	1	0.6
Employment	Providing opportunities for the local "younger" generation to become entrepreneurs. There needs to be an opportunity for businesses to set-up and grow	3	1.8
Cost of Living	Subsidised electricity bills, as and incentive for young people to stay here.	3	1.8
Windfarm	The opportunity for community owned wind turbines. Community green energy project, Struan has the assets but at the moment it's not harnessing them for the good of the community.	2	1.2
Tourism	Small hotel	1	0.6
Windfarm	Using income generated from wind farm developments to fund award of grants to local businesses to generate further growth	1	0.6
Employment	Sponsorship of young folk in further education or apprenticeships.	1	0.6
<b>Housing and Community</b>			
Affordable Housing	Affordable housing scheme for young and old that has criteria to ensure is allocated appropriately e.g. young people from the area, or young people/ families moving to area for work (e.g. NHS).	14	8.6
Housing Quality	making improvements to local homes such as insulation, windows, ground source heat pumps.	1	0.6
<b>Social Interaction</b>			
Networks/Support	Strengthen community ethos, Increased community contact and well-being , Strengthened community relations as things improve linked to windfarm money	4	2.5
Community Spirit	Bringing the community together, bring back the Gala day. Community events, these would potentially create a shared purpose for community members and give the opportunity for social interaction across ages.	3	1.8
Communication	Better information disseminated amongst residents, not just by Facebook, but by posters on the new noticeboard and perhaps regular mail-drops to the more elderly residents. Investing in website.	1	0.6
<b>Care and Maintenance</b>			
Road Maintenance	Quality roads.	1	0.6
Appearance	Improve the village area.	1	0.6

Topic Area	What opportunities do you see in future that we can make happen by working together?	Count	Response Rate
<b>Influence and Sense of Control</b>			
Support and Funding	Better exploitation of wind farm income (e.g. improved provision by sensible spending (or community buy-out) of wind farm money. The continued and proposed investment from windfarm companies will help keep the village looking tidy, cared for and functional. Ensure it benefits everyone in the community. Making good use of windfarm funding and making funding more flexible and accessible to township committees and individuals Accessing what requirements are needed in the community and implementing of works programme of works. Significant amounts of community benefit funding should be forthcoming between now and 2030 which should enable significant developments in line with the Community Action Plan).	13	8.0
Local Collaboration	Exploring an appropriate reconfiguration of existing set up of charitable groups. Possibly consolidating the existing local group, trust and council into one company/charity	2	1.2
Local Collaboration	Continued liaison between the Struan Council and Trust, Continued success of Trust and Council working hard for the community	2	1.2
Community Ownership	Community ownership of land and property,	1	0.6
Community Voice	Hopefully we will have access to the best information to help us make the best choices for Struan.	1	0.6
Community Voice	A community action plan will set out what we intend to do in the next 5-10 years hopefully with all members of the community working closely together.	1	0.6
Community Voice	Bring more people into the decision making process for the community moving forward	1	0.6
<b>General Comments</b>			
General Comment	Very little because I like to do my work alone!!	1	0.6
General Comment	Struan becomes a destination, not somewhere you drive through.	1	0.6
General Comment	Improving quality of life for those living in the community	1	0.6
Overtourism	Struan does not need to be a tourist destination. It does need to be a home to those that live and work here.	1	0.6
General Comment	Making Struan a place where everyone wants to settle	1	0.6
Climate Resilience	More resilience in all aspects / challenges will increase our productivity and ability to absorb the impacts of tourism, global economic changes and climate change.	1	0.6
General Comment	Create something that benefits the community long term that's sustainable.	1	0.6
		<b>163</b>	<b>100</b>

# Struan Community Survey 2023

## 2.16 How do you currently find out what is going on in Struan? (Question 10)



Word of Mouth	72
Facebook group	28
Struan Community Website	27
Local Posters	11
Emails	2
Mail drops	1
Other - Find out very little, usually only after it's happened, especially post covid	1
Other - I live and work here!!	1
Other - I find out after the event	1
Other - WHFP	1
Other - My mother	1
Other - Minutes from SCDG	1
<b>Total</b>	<b>147</b>

### 2.17 How do you think communication can be improved so we can all know what's going on? (Question 11)

Response	Count
New Community Social media page e.g. Facebook	18
Local Posters/ noticeboard	13
Community Newsletter (monthly, quarterly) online and offline	12
Other comment	11
Community Website	10
Email list	8
Communications are already good and serve my needs	7
Mail drops for folks without email	7
Encourage word of mouth	4
Improve Broadband	3
Develop Community Hub to meet, Hold public meetings	2
Create a Whats App group	1
Proactive involvement of wider community in community group plans	1
Ensure CAP report distributed to every home	1
Total statements made	98

### Result

The communities top three preferred modes of communication for the future are:

- Developing new dedicated community social media pages
- Making sure all info is also posted on a public noticeboard in the centre of the village
- Sending a community newsletter at regular intervals by email and post

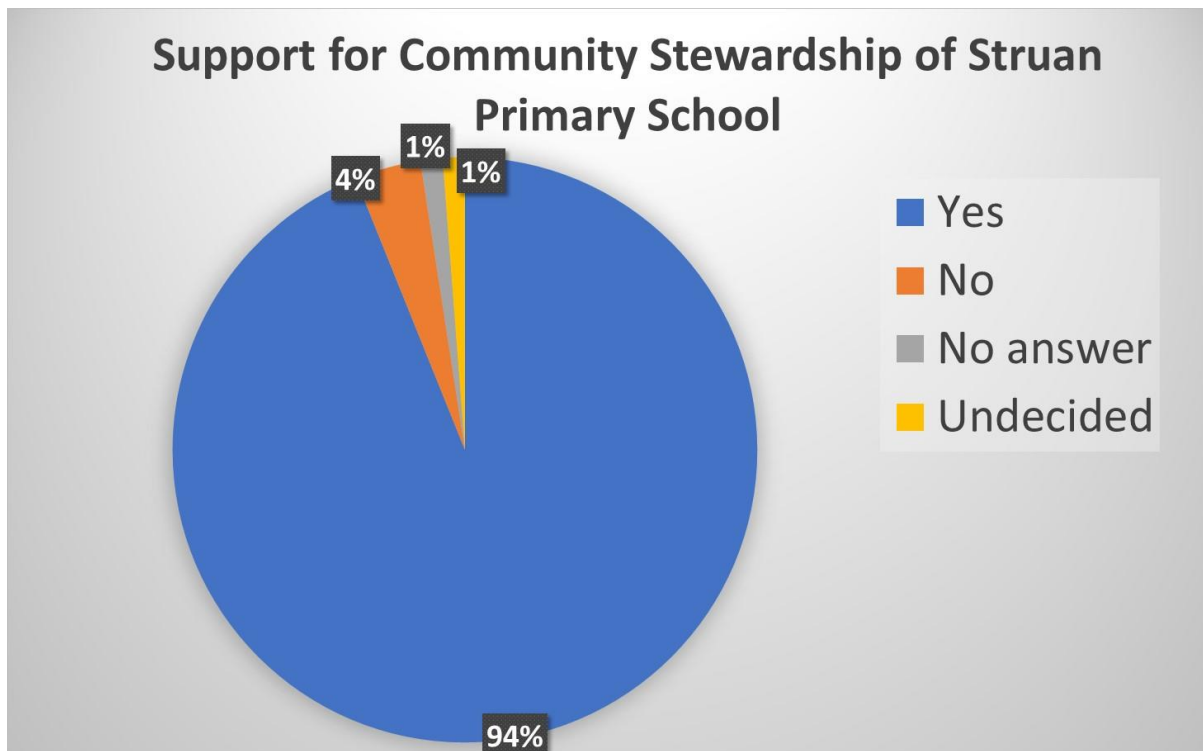
Note that a new community-wide email list has already been initiated as part of the CAP process by the CAP group.

#### *Additional comments*

*Six comments indicated they didn't know there was a Community Council Facebook Page and/or Community Website before they got the leaflet about the CAP process.*

2.18 Do you support the idea of the community taking over the school site and buildings after it has been officially closed? (Question 12)

The following chart summarises responses to question 12: “Do you support the idea of the community taking over the school site and buildings after it has been officially closed?”



### Result

While some caution was expressed, 94% of respondents supported the idea of the community taking over the school site and buildings after it has been officially closed.

Two additional comments were made:

- “Not until the community sees feasibility in this project. This survey has not allowed space for a negative response. Can school be used at present e.g. history meetings, county dancing, gardening so on?”
- “It should have been retained as a school.”

2.19 If you answered yes to the above, what purposes would you like to see the building and site put to? (Question 13)

What purposes would you like to see the building and site put to?	Count	Response Rate (%)
<b>Local events could happen here</b> (eg. club facilities ie lunch club/craft/local interest/sport social events/Gala/Christmas craft fair/jumble sale/Pop-up cultural events, cooking, photography, yoga classes, Boot fairs etc, curry nights, classes of all kinds, crafting groups, wellness groups	31	12.0
<b>Community centre/hall/hub.</b>	31	12.0
<b>Grocery shop</b> (e.g selling local produce, hopefully using the polytunnel manned by volunteers or those willing to help novice gardeners). Maybe have small shop with essential supplies especially for those without transport. Monthly markets - selling local produce and products. Shop on the lines of An Crubh/Armadale/Staffin	26	10.0
<b>Meeting facilities</b> , public meetings, consultations,remote office,	22	8.5
<b>Café</b> (e.g. Comm cafe- comm run for home cooked meals wouldn't compete with existing establishment), coffee n craic / nice space to just meet up and grab a coffee n chat, regular lunches/afternoon teas/activities for local residents. A good cafe which can be used by local residents selling good breakfasts , burgers and well cooked fish and shellfish - we tend to drive to Cafe Cuil or Portree for breakfast with friends and business colleagues -	19	7.3
<b>Toilets</b> for the community and public	15	5.8
<b>Community Garden/Polytunnel</b> (e.g A gardening club to use the polytunnel + some land (like an allotment group)	11	4.2
<b>Get together for the older members of the community.</b> Lunch club/ whist/ darts/ elderly activities/ Knitting group, day service for the aging population I would really like to see the school used to provide some sort of support/day care/reminiscence groups for the older folk; Meeting up opportunities - especially for our older folk. With no bus service through the area my Mum is isolated and I am sure she is not the only one.Cuppa & Chat groups.	11	4.2
<b>Visitors centre</b> , facilities for tourists, something to encourage tourist to stop and spend monies, facilities for visitors (catering, retail, interpretive centre). Broch visitor centre with artifacts. Information point	10	3.9
<b>Sports facilities</b> , the all weather pitch could be utilised greatly improvement of the grounds and equipment for sport/recreational use by the community. gym, swimming pool, games hall, soft-play.	6	2.3
<b>Ability to rent out</b> to generate further income. Priority would be community event space with opportunities for private investment or rental. Something useful and practical that is available to all groups/people to use at an affordable rate	5	1.9
<b>Fitness classes</b> of various types,	5	1.9
A weekly <b>coffee morning</b> or afternoon tea drop in for all	4	1.5
<b>Licensed bar.</b> Maybe a pub/BYOB facility for those who wish it.. social club/bar	4	1.5
<b>Quiz nights</b>	4	1.5
<b>Restaurant.</b> Maybe rent out part of it as a restaurant so used in evenings (nothing here after 4pm).	4	1.5
<b>Children's and youth groups</b>	3	1.2
<b>Other Ideas</b>		
Range of evening or day classes /talks / activities	2	0.8
Childcare, baby and toddler groups	2	0.8
Community cinema	2	0.8
Bring + buy.	2	0.8
Food Bank	2	0.8
Funeral wakes,	2	0.8
Charging points for electric cars.	2	0.8
A local music / art venue (and crafts)	1	0.4
Share ownership houses.	1	0.4
Intergenerational activities, A community centre for children and old alike to share the vast amount of expertise that we have in Struan	1	0.4
Post Office	1	0.4
Local history group	1	0.4
A school with 15 plus kids	1	0.4
Something like men's shed but not just for men where things can be fixed, people can gather, for a purpose to help with mental health issues.	1	0.4
A 'stuff' library or re-use and recycle hub.	1	0.4
An internet hub.	1	0.4
Evening classes.	1	0.4
But in my opinion this isnt the only reason for this form so a random thing to home in on, but yes I do think the community could do a good thing with the school if everyone uses common sense!!!!	1	0.4
Accommodation for staff to work in the setting e.g if it was needed to recruit a manager from off the island	1	0.4
Bunk house type space	1	0.4
Health space for yoga/pilates/massage/podiatry/physio/pharmacy/prescription pick-ups. Possibly G.P. space.	1	0.4

Other Ideas		
Retail space	1	0.4
E.g., Firstly building is in need of considerable repair + need to have regulations upgraded for public use. Apparently I believe there were only a few of public at meeting other than mostly councillors/council officials etc.	1	0.4
Encourage community involvement through shared interests.	1	0.4
Any community consultations	1	0.4
Environmental impact hub	1	0.4
Somewhere for non-denominational church groups to hold services (Struan used to have alot of church-goers which has now sadly been completely diluted.)	1	0.4
Move the recycling skips to the school area.	1	0.4
It is not something i would ever use. But if community want one then go for it.	1	0.4
Catering for weddings	1	0.4
Possible hotel etc.	1	0.4
If not hub, feasible affordable homes for young families or key workers.	1	0.4
Drop-in office for council, advice groups	1	0.4
Fuel	1	0.4
work space for mobile services eg hairdressers, podiatrist, nail technicians,	1	0.4
Public laundry.	1	0.4
a local history/heritage element to share with locals and visitors alike. The school is a focal point in the village, with many members having memories of their time in school	1	0.4
Would like it to be surveyed first before we take the next step otherwise we could end up with a white elephant in the community that is neither safe or viable to anyone to use.	1	0.4
Yes, assuming it is a good purchase price and in good condition. Some concerns would be asbestos (?), Japanese knotweed (currently present), general state of repair and cost of running - fuel, electric etc. We shouldn't take on a dead duck!	1	0.4
If we do purchase then we need a business plan that shows revenue as well as cost. Not in favour of a subsidised venture - it must be able to breakeven on an annual basis.	1	0.4
Banking facilities.	1	0.4
<b>Total statements</b>	<b>259</b>	<b>100</b>

## 2.20 If the community were to take over the school, how do you think we should ensure that the facility becomes a sustainable enterprise (able to support itself through its own income generation)? (Question 14)

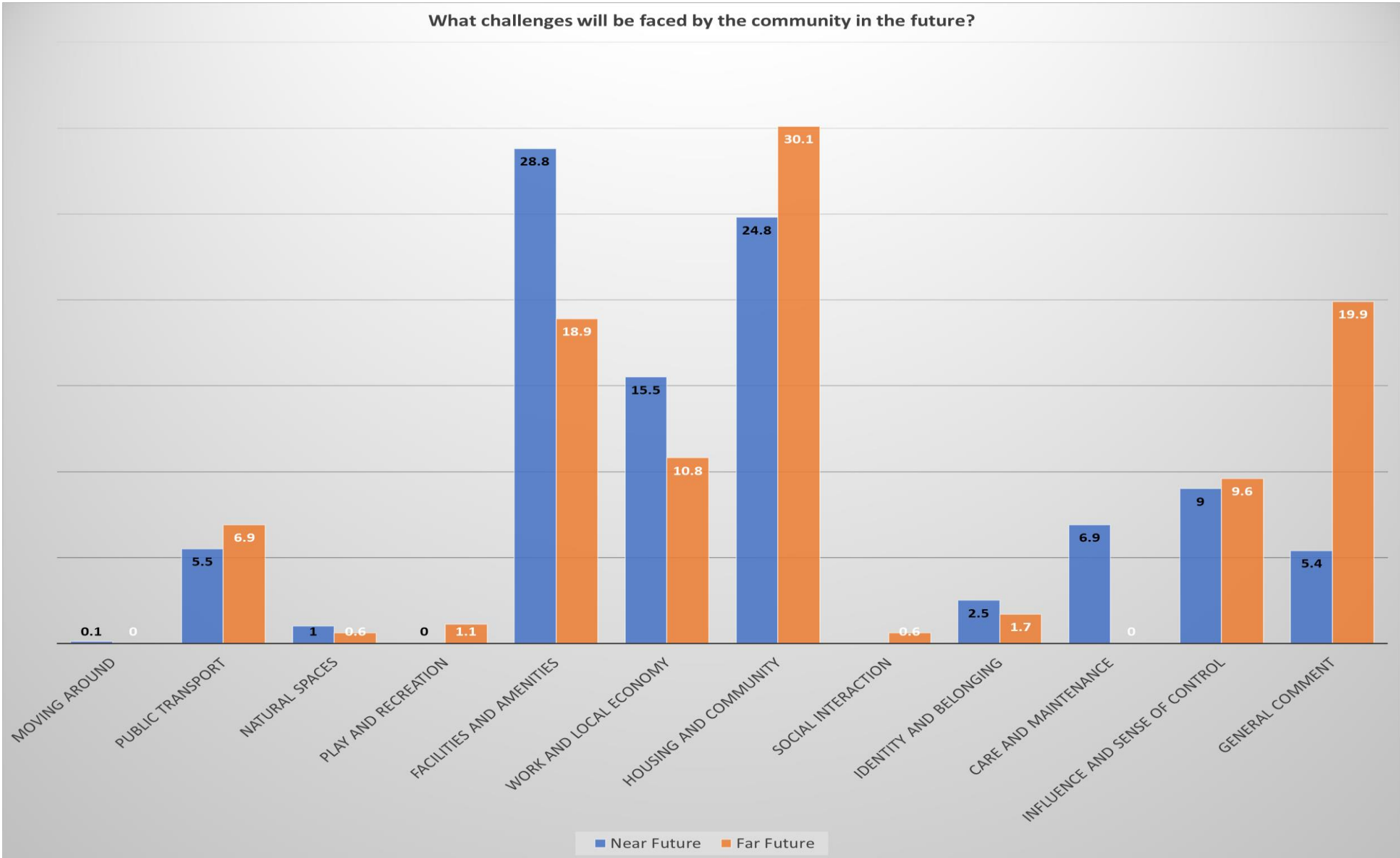
If the community were to take over the school, how do you think we should ensure that the facility becomes a sustainable enterprise (able to support itself through its own income generation)?	Count	Response Rate (%)
<b>Rooms for hire.</b> Hire out facility for private occasions. Charging a fee for the use of the building. Group leaders i.e yoga teachers, would be charged by the hour for the use of the school. Similar to that of the Dunvegan Hall?	29	16.7
<b>Community shop</b> (eg Possibly through selling locally crafted gifts/local produce (lots of folk with polytunnels in the area, Profits from community shop, sell local produce (possibly meat, Croft produce, fish)and produce from community garden along with household essentials. Shop pays a weekly rent for use. Community shop with concession for local producers - requires far less staff to run than a cafe.	21	12.1
<b>Social enterprise café</b> (e.g. Could have "popup" cafe once or twice a month with profits going back into the school.). A lot of people will say a cafe, but cafe costs a lot of money to operate both in staff, equipment and energy use! The big problem on Skye is staffing, and the cost of staff. It is very problematic	21	12.1
<b>Annual grant from Windfarm monies/ SCT.</b> As there is wind farm money it does not necessarily have to be self sufficient in the initial stages. Funding initially could be provided by the Trust and long term by the Community Benefit envisaged after 2030. as we have windfarm monies we are in a fortunate position to make it affordable to use without having to be profitable.	13	7.5
<b>Charge for public toilets</b>	9	5.2
<b>Community fundraising events</b> - coffee mornings, gardening events, ceilidhs, events for children	7	4.0
<b>Bring &amp; Buy Sales.</b> take a reasonable fee for the stuff library or re-use recycle. Host low cost events ie a car boot style event with a table to rent once a month. Holding regular events such as a craft fare, where each participant selling at the fare would be charged.	6	3.4
<b>Camper Van facilities/visior services</b> - Parking spaces for camper vans, camping, laundrette, showers, a drying space.	6	3.4
<b>Visitors centre</b> where tourists contributions help to cover costs. Needs to provide revenue generating facilities so that we can harness the number of visitors to our ancient monuments (Dun Beag, Ullinish Chambered Cairn, etc.) to help make our community facilities sustainable. With a resident population of only around 250 people we will struggle to do this otherwise.	4	2.3
<b>Classes or talks could have a 'give what you can' or suggested fee.</b> Affordable/subsidised fees from users.	4	2.3
<b>Create flats to rent out</b> to people needing to live and work in the area- reasonable priced. Accomodation for health workers or shelter/housing	4	2.3
Quiz nights/bingo nights	3	1.7
Rent 'shop' space to small businesses at a reasonable, sustainable rate. Rental opportunities for small business. anchor tenants to subsidise community uses	3	1.7
Look at how other local community hubs generate money -such as Minginish/Dunvegan do. An Crubh in Sleat. Take a leaf out of how Carbost have community interest and funding to keep it local.	3	1.7
electric car charging,	3	1.7
Using the poly tunnel to grow produce to use in cafe or shop.	2	1.1
create sport/recreational ideas which are attractive to younger generation all over north + central Skye.	2	1.1
Coffee mornings. holding coffee and bake mornings with all proceeds from sell of donated cakes etc going back into the upkeep of the school.	2	1.1
Create a community committee subgroup and look and funding and grant opportunities.	2	1.1
Would need to employ someone to run enterprise & generate income, salary could be covered by wind farm income.	2	1.1
A fuel point, 24 hour unmanned.	1	0.6
income through crowd funding	1	0.6
Local council need to convince public that this has been well thought out prior to taking over	1	0.6
Day service for the aging population (paid for by users)	1	0.6
Licensed bar .	1	0.6
By having a stable management group.	1	0.6
By offering good working conditions / pay for workers	1	0.6
By offering local communities a fraction of our own tax payers money back rather than wasting it on rubbish sculptures littering towns / cities all over the UK.	1	0.6
By the production of viable business plan which needs to be very carefully put together once all necessary + relevant information gathered.	1	0.6
Use a rota of volunteers to man those areas suitable.	1	0.6
Charity shop. Create a space that can be used by facilitators of things like yoga, breathwork and pilates etc...	1	0.6
Ensure that whatever is implemented is affordable and usefu/of interest l to a significant percentage of the population to ensure patronage	1	0.6
Bike hire	1	0.6
community laundry facilities ie large capacity pre pay machine and driers	1	0.6
Hosting of events with small entrance fees, ceilidhs, local musicians	1	0.6
Trying to run it as a business would throw up more problems than is necessary.	1	0.6
Offer a couple of hobbit huts for hire - if the land is available	1	0.6
initially we just need a place to meet and socialize.charges can be made for use	1	0.6
It must be economically viable or people will resent it. Pay the staff rather than volunteers.	1	0.6
But worried if it sold same things as post office does then post office would close.	1	0.6
due to size it is limited to uses it can be rented out for	1	0.6
Leasing office space.	1	0.6
Portree nursery seem to be able to do it so I see now reason why Struan couldn't	1	0.6
Information base	1	0.6
Sustainable enterprise would be ideal but not at the expense of it not being available if it needed to be subsidised by external agency.	1	0.6
Rental of e-bikes, car hire - all of which can be automated/self serve - using credit card etc. so no staff required.	1	0.6
The building is too old and poor layout for anything big in area	1	0.6
The facility needs to first and foremost provide a service to the local people. Secondly provide facilities for tourists who can help achieve financial sustainability.	1	0.6
<b>Total Statements</b>	<b>174</b>	<b>100.0</b>

A comparison of the percentage of responses that have been received for challenges faced in the short and long term.

2.21 On the following page, a graph displays a comparison of the percentage of responses that have been received for challenges faced in the short and long term, according to the Place Standard categories for questions 7 and 8. This is designed to make an initial diagnosis as to what the community sees are the most critical issues facing Struan.

# Struan Community Survey 2023

What challenges will be faced by the community in the future?



### 3. CONCLUSIONS

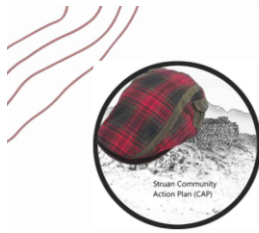
3.1 The following general conclusions can be drawn from paras 2.7 to 2.18:

- People seemed to be reticent to let us know how long they have resided in the community. Was this for fear that their views may not be taken into account?
- **Likes**
  - The scenery, landscape, tranquillity and community spirit of Struan are most liked about the area. Its ease of travel to Dunvegan, Portree and Carbost is very much appreciated.
- **Communications**
  - The overwhelming majority of people in Struan get their community news via Word of Mouth, the Facebook Page and the Struan Community Website. Maximise the impact of these without excluding people who also rely on posters will be key for the future.
- Support for **community stewardship** of the Struan Primary School Property.
  - This is overwhelming at 94%.
- In terms of a [SWOT Analysis](#) of the Community of Struan:
  - **Strengths**
    - Struan's landscape, history, tourism offer, local people (supportive networks and active citizenship) are all considered to be strengths currently.
  - **Weaknesses** (Dislikes)
    - The lack of public transport, poor state of the roads, poor quality broadband and lack of a local shop that meets peoples local needs are seen to be the key weaknesses of Struan.
  - **Opportunities** (These are to follow, and will be explored more deeply during the Action Planning workshops.
  - **Threats** (Challenges)
    - Facilities and amenities and work and the local economy are considered to be more critical issues in the short term, with housing's importance increasing into the future.
    - This appears to be because housing is considered to be so central to attracting and keeping young people in the community for a sustainable future.

3.2 Other observations:

- Considering the declared national and regional climate change emergency, there was a significant and surprising lack of expressed concern in this regard. Only two people mentioned the challenge of Climate Change as being a key issue over the next 10 years. It is not clear what the cause of this is: lack of awareness, concrete opposition, or uncertainty as to how to begin to address these issues locally.

## Appendix 1 – Questionnaire



# Struan Community Action Plan

A joint initiative of SCDG, SCC & SCT

## Community Survey

The Struan Community Action Plan (CAP) community conversation aims to create a shared vision and plan of action for the development of Struan over the next 10 years.

This survey is designed to start the process of finding out what you and the wider community think about Struan and its future. The information gathered will begin to identify the issues that the Action Plan might need to address. It will also help us design the public discussion groups that will be happening over the summer, which we hope you will also be able to attend. Information about these discussion groups will be shared in due course. *This survey is being posted to every home in the Struan Community Council area.*



**Please fill out the online version of this questionnaire if you can: it makes the analysis process quicker for us. You can use the QR code or go to this URL: [www.struancommunity.co.uk/struan-action-plan](http://www.struancommunity.co.uk/struan-action-plan)**

**Alternatively, please use this paper version and post it through the letter box at the primary school for the CAP steering group to pick up. If you would prefer to chat with us directly, contact Paul on [paul@pas.org.uk](mailto:paul@pas.org.uk) or (07970) 735036.**

**However it happens, we very much want to hear from you!**

Follow updates on [Facebook](#) or sign up to our email mailing list. You can do this via the community website or by emailing [paul@pas.org.uk](mailto:paul@pas.org.uk). We ask that each adult and teenager in a household fill out the survey individually. More paper copies are available from Marie Morrison.

**Search for 'Struan Community Council' on Facebook**

The online version of the survey will be live from Monday 5th June. The survey will close on midnight Sunday 18th June 2023, so please submit by then, postal and online.

**Please fill out this form in BLOCK CAPITALS.**  
**This survey is anonymous but it would be helpful to know some basic information about those completing it (see questions 1-3).**  
*If you need more space to answer, please add an extra sheet and staple it to this form before popping it back to us.*

1. Please select your age bracket:

- Under 18
- 18 – 24
- 25 – 34
- 35 – 44
- 45 – 54
- 55 – 64
- 65 – 74
- 75 or older

2. What is your connection to the community in Struan? (Tick all that apply)

- My permanent home is in Struan.
- I have a residence in Struan and another residence elsewhere
- My permanent residence is outside Struan.
- I run a local business/ I am self-employed.
- Other connection (please specify)

---

3. For roughly how many years has Struan been a home for you? (state a whole number of years in digits)

---

4. What do you like about living in the Struan area? Please tell us up to 3 things.

5. Is there anything you don't like about living in Struan? Please tell us up to 3 things.

6. What are Struan's strengths, as a community and place? Please tell us up to 3 things.

7. What challenges are faced by the community right now? Please tell us up to 3 things.

8. What do you think are the challenges that may be faced by the community in 5-10 years' time? Please tell us up to 3 things.

9. What opportunities do you see in future that we can make happen by working together? Please tell us up to 3 things

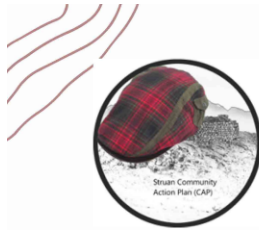
10. How do you currently find out what is going on in Struan? Please tick all that apply.

- Word of mouth
- Facebook group
- SCDG website
- Local Posters
- Other (please specify below)

11. How do you think communication can be improved so we can all know what's going on?

## Thank You!

Please return your completed questionnaire to the letter box at the school



## Struan Community Action Plan

A joint initiative of SCDG, SCC & SCT

### Additional Survey Questions:

#### Proposed community ownership of Struan Primary School

The Struan CAP Group (Struan Community Council, Struan Community Trust and Struan Community Development Group) also want to take this opportunity to survey community opinions about the proposed future transfer of the primary school to community ownership (also known as asset transfer). We would be grateful if you could also respond to these questions, which will help provide an evidence base to enable further dialogue with the Highland Council and eventually an application for asset transfer.



You can answer these additional questions online as well!

Please fill out the online version of this questionnaire if you can: it makes the analysis process quicker. You can use the QR code on the left or go to this URL: [www.struancommunity.co.uk/struan-action-plan/](http://www.struancommunity.co.uk/struan-action-plan/)

Alternatively, use this paper version and post it through the letter box at the primary school for the CAP steering group to pick up. If you would prefer to chat with us directly, contact Paul on [paul@pas.org.uk](mailto:paul@pas.org.uk) or (07970) 735036.

12. Do you support the idea of the community taking over the school site and buildings after it has been officially closed? (please place a cross as appropriate)

- Yes
- No

13. If you answered yes to the above, what purposes would you like to see the building and site put to?

14. If the community were to take over the school, how do you think we should ensure that the facility becomes a sustainable enterprise (able to support itself through its own income generation)?

## Thank You!

**Please return your completed questionnaire to the letter box at the school**